

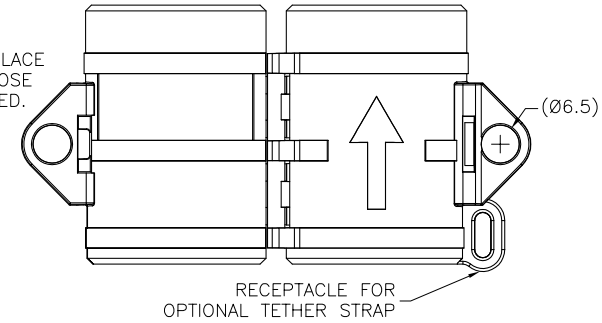
SPECIFICATIONS

HOUSING MATERIAL/COLOR

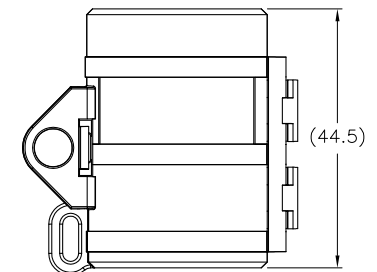
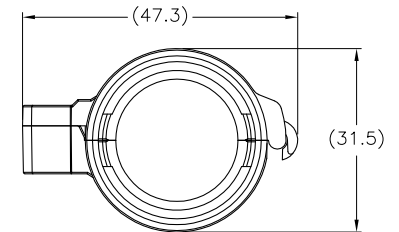
NYLON 66/BLACK

E3018 (MB-MINITEE 1)

TO INSTALL LOCKOUT DEVICE, PLACE AROUND CORDSET END AND CLOSE UNTIL CONNECTOR SNAPS CLOSED.



OPENED VIEW OF LOCKOUT DEVICE



SOURCE DRAWING - FOR REFERENCE ONLY

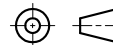
TO REMOVE LOCKOUT DEVICE, INSERT SMALL SCREWDRIVER INTO LOCKING GROOVE AS SHOWN IN PICTURE. ROTATE SCREWDRIVER IN DIRECTION SHOWN UNTIL LOCKING DEVICE RELEASES.

LOCKOUT DEVICE FITS ALL STRAIGHT TURCK MOLDED A SIZED MINIFAST CORDSETS TO MINIFAST TEES OR SPLITTERS. THE TEE REQUIRES THE USE OF E3018 WHEN MOUNTED.

RELATED DOCUMENTS

- 1.
- 2.
- 3.
- 4.

3RD ANGLE PROJECTION



THIS DRAWING IS PROPERTY OF TURCK INC. USE OF THIS DOCUMENT WITHOUT WRITTEN PERMISSION IS PROHIBITED.

**TURCK INC**  
High Technology Sensors and Automation Controls

3000 CAMPUS DRIVE  
MINNEAPOLIS, MN 55441  
1-800-544-7769  
(763) 553-7300  
(763) 553-0708 fax  
turck.com

MATERIAL

FINISH

ALL DIMENSIONS DISPLAYED ON THIS DRAWING ARE FOR REFERENCE ONLY

CONTACT TURCK FOR MORE INFORMATION

DRFT MS

DSGN

UNIT OF MEASUREMENT

MILLIMETERS

DO NOT SCALE THIS DRAWING

DATE 09/18/08

SCALE 1=1.3

DESCRIPTION

LOCK-MINI-TEE

IDENTIFICATION NO.

A9400

REV

A

FILE: A9400

SHEET 1 OF 1

A	DRAWING RELEASE	MS	10/09/08	
REV	DESCRIPTION	BY	DATE	ECO NO.